



Webroot SecureAnywhere® Business – Mobile Protection

Recent studies show that the number of organizations whose employees have three or more devices each will grow to 60% over the next 12-18 months, while the statistics for users with four or more devices will double.¹ Quick and easy ways to conduct business on the go are gaining momentum; so too, is a fast, easy and effective way to secure endpoint devices for use in your organization.

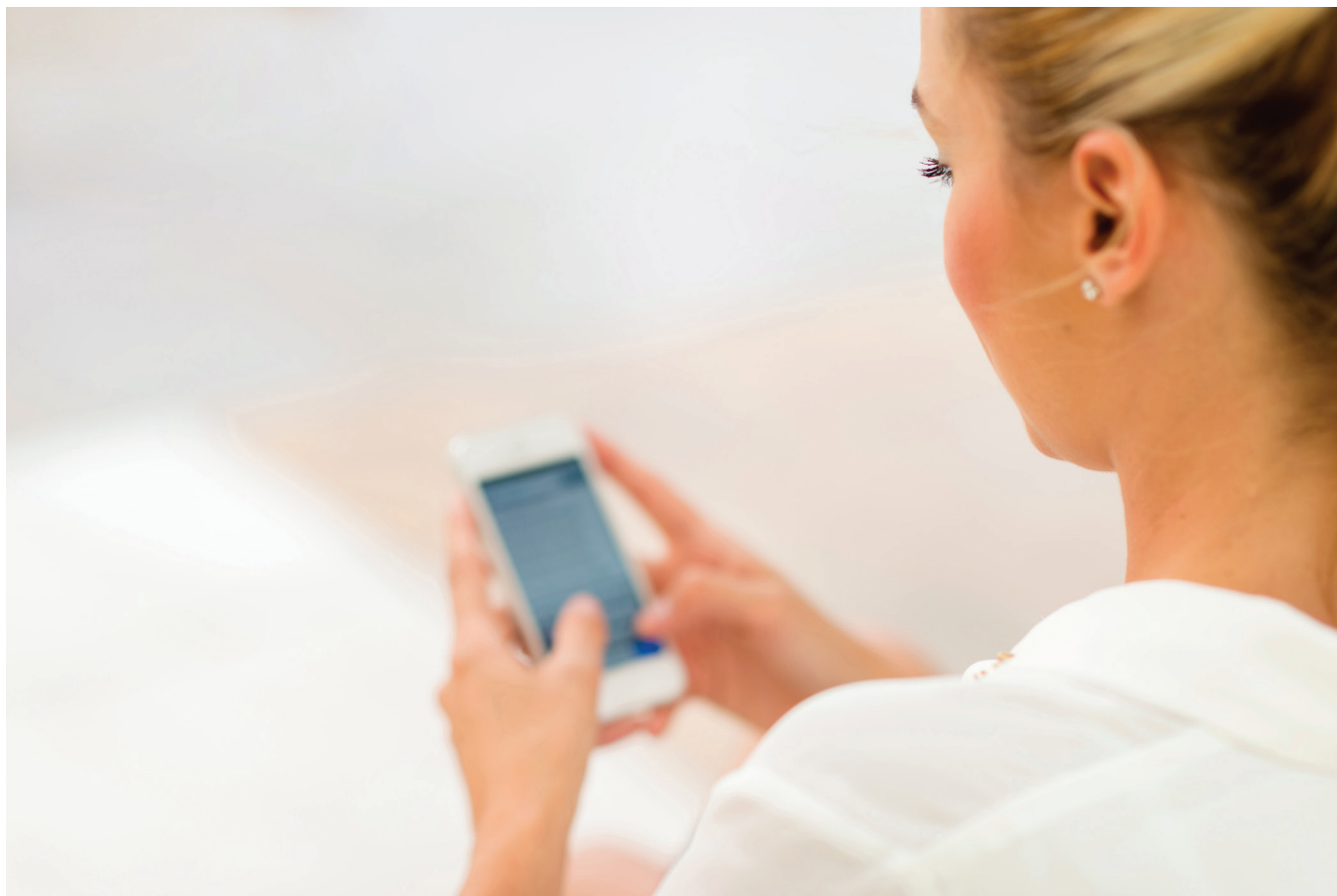
Like laptops, mobile devices are susceptible to digital attacks. More and more users rely on smartphones and tablets to manage their personal and business data, opening up an attractive new option for cybercriminals. While infection rates and risks vary widely by platform, mobile malware is growing exponentially for both Android™ and iOS® devices. The emergence of new mobile malware in 2013 has already doubled the numbers from 2012.²

In addition to cyber-attacks, mobile devices are highly vulnerable to theft and loss due to their size and portability. Although they can help maximize employee productivity, managing and securing these devices presents a unique challenge for IT administrators.

Webroot SecureAnywhere® Business – Mobile Protection secures devices from malware, malicious websites and app hijacks, while protecting corporate and user data against accidental loss or theft. Leveraging cloud security intelligence, there is no on-premise management hardware or software to contend with. Instead, visibility and control are available via the Webroot SecureAnywhere Business Management Console website, dramatically simplifying administration over mobile devices, PCs and network endpoints. Webroot SecureAnywhere Business – Mobile Protection is also designed as a low resource usage solution, keeping operational costs down and device performance optimal. It minimizes battery, bandwidth and memory usage, and is always up to date.

¹ Webroot Market Survey July 2013

² McAfee Threat Report 2nd. Quarter 2013



QUICK FACTS

- » Intuitive management website to manage mobile devices and other endpoints from anywhere
- » Market-leading defense against mobile threats powered by Webroot® Intelligence Network (WIN) cloud security services
- » Comprehensive protection covering malware, web browsing, identity, phishing attacks and data theft
- » Lost Device Protection to remotely locate, lock, or wipe a lost or stolen device
- » Minimized device resource usage – won't slow down the device, hinder productivity, or drain battery power
- » Low bandwidth consumption for minimal mobile data/bandwidth usage
- » Lightweight client runs in the background and scans without interrupting user activity

KEY BENEFITS

Management

Webroot SecureAnywhere® Business – Mobile Protection is a cloud-based service that offers easy deployment and centralized management across mobile devices, laptops and servers.

Web-based Administration

- » Intuitive, single point of control for visibility and reporting on mobile devices and PCs
- » Mobile dashboard provides instant status of devices needing attention
- » Executes remote commands for general and lost device protection
- » Configure email, Wi-Fi and Device Administration policy settings remotely
- » Customizable alerts via email or SMS
- » Ability to create Policy Groups and default policies
 - NEW for Android, policies covering Antivirus shields, Lost Device Protection, SMS Blocking, Secure Web Browsing and Password/Lock enforcement
 - NEW for iOS®, General policies and Passcode enforcement, as well as Wi-Fi, VPN and approved email connections

Cloud Simplicity

- » No servers or on-premise infrastructure required, reducing capital expenditure and administrative cost
- » Built on scalable, redundant Amazon Web Services, ensuring your service can grow as your business grows
- » Fast and easy deployment via email, SMS or QR code
- » Quick updates that don't impede performance or productivity

PROTECTION

Webroot SecureAnywhere® Business – Mobile Protection delivers uncompromising defense against malware and Web-based threats, ensuring your end users and your business data are protected.

Antivirus

- » Uses WIN cloud security services to deliver the most advanced threat protection
- » Automatically scans applications and files for viruses, spyware and Trojans
- » Security shields block malware before it can install itself
- » Displays alerts when the device is vulnerable to attack, reducing the risk of a security breach
- » Helps organizations achieve regulatory compliance, such as PCI-DSS
- » Protects devices even when they are disconnected from the corporate network

Secure Web Browsing

- » Automatically scans URLs to block fraudulent websites and other harmful content
- » Uses the proprietary Webroot URL content filtering and Web reputation data to protect against phishing attacks
- » New Real-Time Anti-Phishing detects phishing sites up to 3-5 days sooner than any other service

Lost Device Protection Mechanisms

- » Quickly access and lock a compromised device, limiting corporate data loss and protecting end user privacy
- » Remote access allows you to access the management website from anywhere to execute remote commands, including:
 - Remote Lock. Locks the device if it's lost or stolen.
 - Remote Wipe. Wipes contacts, text messages, other personal information.
 - Scream locator. Sounds an alert to help find a device.
 - Device Locate. Provides a device's location on a map.
 - SIM Card Lock. Automatically locks the device when the SIM card is removed.

Call/SMS Blocking

- » Blocks unwanted calls and SMS messages, and automatically blocks SMS messages containing malicious URLs

Application Inspector

- » Scans all applications and updates for threats
- » Identifies apps that cost money, access sensitive or personal information, track device location, and drain the battery



Webroot SecureAnywhere Business – Mobile Protection has a lightweight footprint, minimizes battery and network consumption and is backed by unrivalled technical support.

- » Current and cumulative status of battery use by each app, updated every 24 hours without having to reboot device
- » Provides details of applications that access the network

- » Light on both device memory and battery utilization
- » Automatically protects, scans and checks for security updates with minimal disruption

- » Integrated online ticketing through management website in over 65 languages
- » Live phone-based support available
- » World-class support with 98%+ satisfaction rating

Management Portal Access:

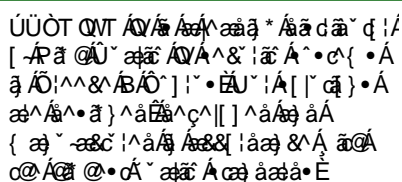
- » Internet Explorer® version 7 and newer
- » Mozilla® Firefox® version 3.6 and newer
- » Chrome 11 and newer
- » Safari 5 and newer
- » Opera 11 and newer

Operating Systems:

- » Android™ operating system version 2.2 or higher
- » Android-compatible phone or tablet with 3 MB of free storage space
- » Apple® iOS 4.2 or later
- » Compatible with iPhone® and iPad® devices
- » Mac OS® X v. 10.8 “Mountain Lion”
- » Mac OS® X v. 10.9 “Mavericks”

Important: Some features are not available on both mobile platforms. Due to Apple restrictions, antivirus functionality is currently unavailable for iOS devices.

© 2014 Webroot Inc. All rights reserved. Webroot, SecureAnywhere, Webroot SecureAnywhere, Webroot Intelligence Network, and WIN are trademarks or registered trademarks of Webroot Inc. in the United States and/or other countries. Microsoft, Windows, Windows Vista, and Internet Explorer are trademarks or registered trademarks of Microsoft Corporation in the United States and/or other countries. Mozilla and Firefox are registered trademarks of the Mozilla Foundation. All other trademarks are properties of their respective owners.



Ú!^ { ã { Á/ÃScàÈ
ì Áā [^] [• Á Ë
FF! | HZ@ } • ÁZ
ÉHGFHEG! | | | €
... È!^ { ã { aÈ!